



Monday 21 January 2013

To: Board Members of the South Cambridgeshire Crime and Disorder Reduction Partnership & Strategic Tasking and Co-ordination Group

Rick Hylton (Chairman)

Dear Sir / Madam

You are invited to attend the next meeting of **SOUTH CAMBRIDGESHIRE CRIME AND DISORDER REDUCTION PARTNERSHIP & STRATEGIC TASKING AND CO-ORDINATION GROUP**, which will be held in the **SWANSLEY ROOM, GROUND FLOOR** at South Cambridgeshire Hall, Cambourne Business Park, Cambourne, Cambridge, CB23 6EA on **TUESDAY, 29 JANUARY 2013 at 9.45 a.m.**

Yours faithfully

**CLAIRE DILLON**

Democratic Services Officer, South Cambridgeshire Crime and Disorder Reduction Partnership & Strategic Tasking and Co-ordination Group

**If you have any specific needs in relation to access to the agenda, for example large print, please let us know, and we will do what we can to help you.**

---

<b>AGENDA</b>		<b>PAGES</b>
<b>1. Introductions and Apologies</b>		
<b>2. Welcome to Stakeholder Event - Rich Hylton (5 mins)</b>		
<b>3. Declarations of Interest</b>		
<b>4. Minutes of Previous Meeting</b>		<b>1 - 6</b>
<b>5. Update on Police &amp; Crime Commissioner (15 mins)</b>		
<b>REVIEWING: PAST 6 MONTHS (40 MINS)</b>		

South Cambridgeshire District Council, South Cambridgeshire Hall, Cambourne Business Park, Cambourne, Cambridge CB23 6EA

Tel: 03450 450 500 Fax: 01954 713149

Democratic Services Contact Officer: Claire Dillon 03450 450 500

6. **Update from CDRP Tasking & Co-ordination Group (including Statement of Expenditure 2012/13) - Jean Hunter** 7 - 8
7. **Crime and Anti-Social Behaviour in the District**  
Presentation by CI Darren Alderson/ Leigh Roberts.
8. **DISCUSSION AND QUESTIONS**  
  
**LOOKING AHEAD: NEXT 12 MONTHS - 60 MINUTES**
9. **Agree Community Safety Priorities 2013/14 - Leigh Roberts** 9 - 28
10. **Discuss 2013/14 CDRP Spending Priorities - Gemma Barron**
11. **Next Stakeholder Event - Rick Hylton**
12. **Election of Chairman**

### **OUR VISION**

South Cambridgeshire will continue to be the best place to live and work in the country. Our district will demonstrate impressive and sustainable economic growth. Our residents will have a superb quality of life in an exceptionally beautiful, rural and green environment. The Council will be recognised as consistently innovative and a high performer with a track record of delivering value for money by focussing on the priorities, needs and aspirations of our residents, parishes and businesses.

### **OUR VALUES**

We will demonstrate our corporate values in all our actions. These are:

- Trust
- Mutual respect
- A commitment to improving services
- Customer service

## **GUIDANCE NOTES FOR VISITORS TO SOUTH CAMBRIDGESHIRE HALL**

While the District Council endeavours to ensure that visitors come to no harm when visiting South Cambridgeshire Hall, those visitors also have a responsibility to make sure that they do not risk their own or others' safety.

### **Security**

Members of the public attending meetings in non-public areas of the Council offices must report to Reception, sign in, and at all times wear the Visitor badges issued. Before leaving the building, such visitors must sign out and return their Visitor badges to Reception.

### **Emergency and Evacuation**

In the event of a fire, a continuous alarm will sound. Evacuate the building using the nearest escape route; from the Council Chamber or Mezzanine viewing gallery this would be via the staircase just outside the door. Go to the assembly point at the far side of the staff car park.

- **Do not** use the lifts to exit the building. If you are unable to negotiate stairs by yourself, the emergency staircase landings are provided with fire refuge areas, which afford protection for a minimum of 1.5 hours. Press the alarm button and wait for assistance from the Council fire wardens or the fire brigade.
- **Do not** re-enter the building until the officer in charge or the fire brigade confirms that it is safe to do so.

### **First Aid**

If someone feels unwell or needs first aid, please alert a member of staff.

### **Access for People with Disabilities**

The Council is committed to improving, for all members of the community, access to its agendas and minutes. We try to take all circumstances into account but, if you have any specific needs, please let us know, and we will do what we can to help you. All meeting rooms are accessible to wheelchair users. There are disabled toilet facilities on each floor of the building. Infra-red hearing assistance systems are available in the Council Chamber and viewing gallery. To use these, you must sit in sight of the infra-red transmitter and wear a 'neck loop', which can be used with a hearing aid switched to the 'T' position. If your hearing aid does not have the 'T' position facility then earphones are also available and can be used independently. You can obtain both neck loops and earphones from Reception.

### **Toilets**

Public toilets are available on each floor of the building next to the lifts.

### **Recording of Business and Use of Mobile Phones**

The Council is committed to openness and transparency. The Council and all its committees, sub-committees or any other sub-group of the Council or the Executive have the ability to formally suspend Standing Order 21.4 (prohibition of recording of business) upon request to enable the recording of business, including any audio / visual or photographic recording in any format.

Use of social media during meetings is permitted to bring Council issues to a wider audience. To minimise disturbance to others attending the meeting, all attendees and visitors are asked to make sure that their phones and other mobile devices are set on silent / vibrate mode during meetings.

### **Banners, Placards and similar items**

No member of the public shall be allowed to bring into or display at any Council meeting any banner, placard, poster or other similar item. The Chairman may require any such item to be removed.

### **Disturbance by Public**

If a member of the public interrupts proceedings, the Chairman will warn the person concerned. If they continue to interrupt, the Chairman will order their removal from the meeting room. If there is a general disturbance in any part of the meeting room open to the public, the Chairman may call for that part to be cleared.

### **Smoking**

Since 1 July 2008, the Council has operated a Smoke Free Policy. Visitors are not allowed to smoke at any time within the Council offices, or in the car park or other grounds forming part of those offices.

### **Food and Drink**

Vending machines and a water dispenser are available on the ground floor near the lifts at the front of the building. Visitors are not allowed to bring food or drink into the meeting room.

This page is left blank intentionally.

**SOUTH CAMBRIDGESHIRE CRIME AND DISORDER REDUCTION PARTNERSHIP**

Minutes of the meeting held on Tuesday, 12  
June 2012 at 10.00 a.m.

PRESENT:	Rick Hylton – Chairman	
Members:	Chief Inspector Alderson Gemma Barron Mike Hill  Jean Hunter Leon Livermore Cllr John Reynolds Cllr Ben Shelton Cllr Mandy Smith  Susie Talbot Hannah Waghorn Inger O'Meara Nicky Phillipson	Cambridgeshire Constabulary Partnerships Manager, SCDC Health and Environmental Services Director, SCDC Chief Executive, SCDC Cambridgeshire County Council Lead Member, Police Authority SCDC Cambridgeshire County Council, Papworth and Swavesey Electoral Division Cambridge County Council Probation NHS Cambridgeshire Police Authority
Officers:	Claire Dillon	Member Services Officer

**Action****1. WELCOME TO STAKEHOLDER EVENT (RH)**

The Chairman welcomed attendees and explained that the meeting was the first stakeholder event since the last CDRP meeting in November 2011 which has since disbanded. The key objective of stakeholder group meetings would be to ensure good work is on-going, to hold partners to account, to challenge and to celebrate success.

**2. APOLOGIES**

Apologies were received from Laura Hutson, Vickie Crompton, Leigh Roberts, Pat Mungroo, Philip Aldis and Inspector Chris Savage.

**3. DECLARATIONS OF INTEREST**

County Councillor Mandy Smith declared a personal interest as a member of Safer and Stronger Communities Overview and Scrutiny Committee at the County Council.

**4. CRIME AND ANTI-SOCIAL BEHAVIOUR IN THE DISTRICT (CI DA)**

Chief Inspector Darren Alderson presented a summary of crime and disorder across the District over the past twelve months.

Summary:

- Crime and disorder continues to reduce across South Cambridgeshire.
- South Cambridgeshire remains vulnerable due to rural nature of area and perceived affluence.

- Working with our communities to ensure sound engagements and communication links.
- The CDRP must be central to reducing crime and disorder by ensuring responsible bodies are doing their part and working together.

Details:

The Chief Inspector reported that his strategy for fighting crime was to allocate officers in a localised way to avoid staff being deployed elsewhere. The new staffing structure across Cambridgeshire Constabulary has helped to achieve this.

South Cambridgeshire remains an attractive County for criminality as it is rural and affluent, with businesses providing light industry and farming; fuelling the number of metal thefts and related offences. The importance of linking plans to tackle crime with South Cambridgeshire District Council's aims and visions was emphasised.

There had been a rise in the number of domestic violence offences reported; this was deemed a positive result as more victims are feeling comfortable enough to report incidents to police. The rise in reports was being matched by a rise in detections.

According to data there had been a peak in anti-social behaviour offences during the summer months due to the school holidays, better weather and longer days.

However the perception of anti-social behaviour in South Cambridgeshire remains at 0.5%, according to a survey carried out over the last four years. The aim would be to identify people that may be vulnerable early on, to prevent anti-social behaviour issues from escalating.

The Chief Inspector emphasised the need for joint efforts and meaningful engagement between Partner Agencies.

## **5. POLICE AND CRIME COMMISSIONER (NP)**

Nicky Phillipson from the Police Authority was in attendance to provide an update on the election of a Police and Crime Commissioner in November 2012 and on the implications for the CDRP.

Two groups had been working on compiling a report to inform the Police and Crime Plan. The first group is an internal group working to ensure the successful transfer of Scrutiny Committees. The other has been working with Partners to create the Police and Crime Panel, chaired by Cambridgeshire County Council and administered by Peterborough City Council.

The Police and Crime Panel, comprised of nine members, would not be a replacement of the Police Authority, but would be there to scrutinise the Commissioner. A Shadow Panel would be set up by July 2012.

Early conversations had taken place with CDRP's regarding funding implications and risks. A Project Manager has been instated to oversee a Victim and Offender Needs Assessment incorporating data from

workshops, multi-agency input and views of the third sector. The assessment, and an evidence-based report compiled by Cambridgeshire County Council would be used to inform the Commissioner's Crime Plan.

Police and Crime Panels would cost less than the Police Authority and would be funded by Central Government. The budget has been set at £2million per year to cover the cost of all Panels.

Concerns were expressed about awareness of the elections and about the possibility of a low turn-out due to the weather in November and lack of promotion.

Nicky Phillipson explained that the elections have been promoted via CDRP's, flyers at Neighbourhood Panel meetings and in a feature in South Cambs magazine. Updates in the form of a newsletter would be distributed to Board members.

Councillor Reynolds emphasised that member involvement is the key to a successful election. The structure change would take place gradually moving towards the smooth implementation of the new Commissioner. Responsibilities moving forward would be discussed at the next Police Authority meeting to be held this month.

Concerns over continuity were expressed and Nicky Phillipson confirmed that Police Authority work would be transferred as a going concern, with the abolishment of the Police Authority taking place the day after the elections. Police Authority staff would then transfer across to the Commissioner's office to ensure continuity.

The Chairman requested that the Needs Assessment be distributed to T&CG members for inclusion on their next meeting agenda.

## **6. UPDATE FROM CDRP TASKING & CO-ORDINATION GROUP (JH)**

The Chief Executive provided an update on Task and Coordination Group meeting aims and objectives.

The creation of monthly T&C Group meetings has enabled the establishment of a practical group that works on a local level. This minimises paperwork and uses a core team of representatives from Partner Agencies to tackle local issues as they arise. Specific members of the Board can be called in as required to provide more specific information. The first half of the meeting looks at intelligence received, as well as updates on the outcome of work to address Neighbourhood Panel concerns raised at the meetings. The second half of the meeting focuses on case specific issues. This process is intended to provide swift, effective action.

The Director of Health and Environmental Services at South Cambridgeshire District Council then provided an additional update on topics covered at T&C Group meetings.

Lessons learnt following the creation of new communities such as Cambourne have been built in to the Local Plan. Local Planners have been involved in order to attempt to 'design crime out' of communities. The meeting offers an opportunity to share intelligence and to give a

joined-up response to Partners and the public.

Direct action arising from issues raised at Neighbourhood Panel meetings has included visits to Whittlesford scrapyards which have served to resolve problems in the area. All other scrapyards in the District have now been visited, and 'Action Days' have been held to disrupt criminality from coming in to the area.

The meeting is an opportunity to discuss successes, to make a difference on the ground, to raise awareness of key problem areas, to build relationships and to ensure a mutual understanding moving forward.

Hannah Waghorn, Lead Officer for the Probation Team, volunteered to attend T&C Group meetings as the Probation Service Representative. The Board welcomed this suggestion and agreed that having a Probation Service representative would be a good idea.

Concerns were raised about the potential loss of communication that may have occurred due to the replacement of CDRP meetings with less frequent Stakeholder events and about the potential for loss of ownership. The Board were reassured by T&C Group members that the meetings did capture concerns effectively from a range of sources and that efforts were being made to increase attendance at Neighbourhood Panel Meetings, and therefore increase the amount of intelligence acquired. Efforts included the on-going project being carried out by Inspector Chris Savage to expand Panel Meetings as a forum using social media.

Chief Inspector Alderson agreed to bring a report back to the next meeting on Inspector Savage's work to increase engagement with the public.

Concerns were expressed about the lack of communication of outcomes and results to the public. The Board agreed that effective communication needs to be maintained in order to convey successes to Members and the public. The use of electronic engagement and perhaps a radical change to the way things are done currently were methods discussed to improve efficiency.

A request was made to add Road Safety concerns to the T&C Group agenda as concerns were being expressed about this particular issue regularly at Neighbourhood Panel Meetings. This would tie-in with the Health and Wellbeing Project as it incorporates issues relating to road safety. The Board was requested to compose a response to the consultation that would be sent out in due course.

The Community Safety Manager then outlined the Statement of Expenditure document, highlighting that points one to four referred to income, and points five to eight referred to expenditure. It was noted that there had been an underspend on the funding for the Partnership Support Officer and on funding for the Anti-Social Behaviour Caseworker compared with the original forecast.



## **7. COMMUNITY SAFETY PLAN 2012-13 (JH)**

The Chief Executive of South Cambridgeshire District Council explained that the Community Safety Plan had been based on trends over the previous twelve months and asked Board Members for comments.

It was suggested that priority number four 'reducing crime and re-offending' should be moved to the top of the list as it covers all the other points below it.

A request was made to add road safety to the list as previously there had been a reliance on the County Council's team to carry out work to reduce offending. This team has suffered significant staffing cuts so it was felt that road safety initiatives should get County-wide support. It was agreed that Leon Livermore would provide some road safety intelligence for the next T&C Group meeting for consideration.

The Board agreed to re-work the Plan to ensure that 'plain English' and less corporate terminology was used throughout the document.

Concerns were expressed about the measurability of the priorities and targets within the Plan. Comments indicated that perhaps the scope of the priorities was too broad to be measurable and that it could become a long 'wish list' of issues.

The Task & Coordination Group agreed to re-work the Plan taking on-board all comments made. The Plan would then be circulated to all Board Members. It was agreed that road safety would be discussed at the next Stakeholder Event to decide if this should be added to CDRP priorities.

## **8. 2012-13 CDRP FUNDING PLAN (GB)**

The Partnerships Manager at South Cambridgeshire District Council reported that the Funding Plan linked in with the Community Safety Plan.

A full and frank discussion was held on the need to plan for a contingency budget, should the need arise for a Domestic Homicide Review to be carried out in the future.

The estimated cost was predicted to be approximately £20,000 and has been a statutory requirement since April 2012. It would be the responsibility of the CDRP to find the money to fund a review.

It was agreed that a rationale behind not setting the money aside now was required, should the need to fund a review arise.

It was suggested that a Risk Log be maintained to flag up any potential risks and to keep the issue 'alive'.

The Board noted Appendix A, the Proposed CDRP Funding Plan.

The Chairman emphasised the need for the Board to recognise its responsibilities regarding Domestic Homicide Reviews and it was agreed that the Tasking and Coordination Group would reflect on their obligations

and on the outcomes of the County-Wide Officer Group meeting arranged to discuss this issue on Wednesday 13 June 2012.

**9. NEXT STAKEHOLDER EVENT (RH)**

The Board agreed that Integrated Offender Management and road safety would feature on the agenda for the next meeting.

The Chairman reminded the Board that the next meeting would be held on Tuesday 29 January 2013 at 9.30am in the Swansley Room at South Cambs Hall.

---

**The meeting ended at 11.55 a.m.**

---

Statement of South Cambs CDRP Expenditure Financial Year April 2012 to March 2013 (as at 18 January 2013)							
		Column A	Column B	Column C	Column D	Column E	Column F
LINE	INCOME/EXPENDITURE	SSCF	POOLED	TOTAL	SPEND YTD	% OF BUDGET	NOTES
1	TOTAL FUNDING AVAILABLE FOR 2012-2013	20,540.00	34,844.00	55,384.00			
2	PERCENTAGE OF OVERALL BUDGET	37%	63%	100%			
2	<b>FUNDING ALLOCATIONS:</b>						
3	a. TACKLING ANTI SOCIAL BEHAVIOUR	2,040.00	10,960.00	13,000.00	9,469.48	73%	The YTD spend figure of £9469,48 includes: (a) salary payments to ASB Caseworker Q1 to Q3 (b) maternity payments to ASB Caseworker Q1 to Q3 (c) agency cover for Maternity Leave Q1 to Q3  Anticipated Q4 spend is <b>£3849</b> , making an anticipated full year total ASB spend of <b>£13,318.48</b>
4	b. EARLY INTERVENTION FUND	15,000.00	13,000.00	28,000.00	500.00	2%	
5	c. CRIMES AGAINST BUSINESS	0.00	2,000.00	2,000.00	0.00	0%	PCSO assigned to lead this work
6	d. INFORMATION & INTELLIGENCE	3,500.00	8,884.00	12,384.00	3,500.00	28%	CDRP has contributed 50% to Crime & Disorder analyst post  CDRP has committed approx £5,000 towards E-CINS cloud based case management solution
7	TOTAL BUDGET EXPENDITURE OF BUDGET YEAR TO DATE				<b>13,469.48</b>	24%	
8	FUNDS REMAINING				<b>41,914.52</b>	76%	
9	ANTICIPATED BALANCE REMAINING AND TOTAL SPEND AT THE END OF THE FINANCIAL YEAR			<b>33,065.52</b>	<b>22,318.48</b>	40%	The figure in column D is based on: £13,318.48 anticipated spending on Tackling ASB (see above) £500 Early Intervention Fund £3,500 Information & Intelligence) £5,000 E-CINS (cloud-based case management tool)  The CDRP needs to ensure that the SSCF element of its funding (£20,540 37%) of overall total budget) is spent before 31 March 2013.

This page is left blank intentionally.



South Cambridgeshire Crime and Disorder Reduction Partnership

Strategic Assessment 2012/13

## Document Details

---

The document has been produced by the Research and Performance team, Cambridgeshire County Council, on behalf of South Cambridgeshire Crime and Reduction Partnership and will be available to download from the county council website in due course.

Title	South Cambridgeshire Community Safety Strategic Assessment 2012/13
Date created	November 2012
Description	The purpose of this document is to provide the South Cambridgeshire Crime and Disorder Partnership with an understanding of key community safety issues affecting the district.
Produced by	Leigh Roberts, Senior Research Officer – Community Safety Cambridgeshire County Council Tel: 01223 715310 Email: <a href="mailto:leigh.roberts@cambridgeshire.gov.uk">leigh.roberts@cambridgeshire.gov.uk</a>
Additional contributions	Gemma Barron South Cambridgeshire District Council  Darren Alderson and the Central Intelligence Bureau Cambridgeshire Constabulary
South Cambridgeshire Crime and Disorder Reduction Partnership	Philip Aldis <a href="mailto:communitysafety@scambs.gov.uk">communitysafety@scambs.gov.uk</a>
Geographical coverage	South Cambridgeshire district
Time period	Data up to December 2012, plus historic data where appropriate.
Format	pdf
Version	1.0
Usage statement	This product is the property of the Research and Performance team, Cambridgeshire County Council. If you wish to reproduce this document either in whole, or in part, please acknowledge the source and the author(s).
Disclaimer	Cambridgeshire County Council, while believing the information in this publication to be correct, does not guarantee its accuracy nor does the County Council accept any liability for any direct or indirect loss or damage or other consequences, however arising from the use of such information supplied.

## Contents

---

Section	Description	Page
	Document Details .....	i
	Contents .....	ii
<b>Section 1:</b>	<b>Executive Summary .....</b>	<b>1</b>
<b>Section 1.1:</b>	<b>Key Findings .....</b>	<b>1</b>
<b>Section 1.2:</b>	<b>Recommendations.....</b>	<b>1</b>
<b>Section 2:</b>	<b>Introduction .....</b>	<b>3</b>
	Background .....	3
	Structure of the document .....	3
	Additional data.....	3
<b>Section 3:</b>	<b>Overview of Community Safety .....</b>	<b>4</b>
	Rural South Cambridgeshire .....	4
<b>Section 3.2:</b>	<b>Long-term trends .....</b>	<b>4</b>
<b>Section 3.3:</b>	<b>Victims and Offenders.....</b>	<b>5</b>
<b>Section 3.4:</b>	<b>Additional Monitoring.....</b>	<b>6</b>
	Burglary .....	6
	Road safety .....	7
<b>Section 4:</b>	<b>Performance and Partnership Activity .....</b>	<b>8</b>
<b>Section 4.1:</b>	<b>Partnership Calendar of Community Safety Issues.....</b>	<b>9</b>
<b>Section 5:</b>	<b>Priority Analysis.....</b>	<b>10</b>
<b>Section 5.1:</b>	<b>Anti-Social Behaviour .....</b>	<b>10</b>
<b>Section 5.2:</b>	<b>Crimes against Businesses .....</b>	<b>11</b>
<b>Section 5.3:</b>	<b>Supporting Communities and Growth .....</b>	<b>12</b>
	Design and new developments.....	12
	People .....	14
<b>Section 5.4:</b>	<b>Offending.....</b>	<b>15</b>
<b>Section 5.5:</b>	<b>Domestic Abuse.....</b>	<b>16</b>
<b>APPENDIX A.</b>	<b>Data Sources and Acknowledgements .....</b>	<b>17</b>

## Section 1: Executive Summary

---

This section summarises the key findings and recommendations for the partnership.

### Section 1.1: Key Findings

---

The likelihood of being a victim of a crime or an anti-social behaviour incident is relatively low in South Cambridgeshire. This is due to a combination of factors, particularly the rural nature and affluence of the district means that the level of crime and anti-social behaviour is very low. Unlike other areas of the county there are few large town centres or pub clusters. It is the vulnerability of each victim or offender that determines the impact of the crime or incident.

Domestic abuse continues to feature as a problem within the area. Very little of the violence is attributable to the night-time economy, but some violence will be linked to alcohol. All violent crime is down 12% year to date (April – December 2012), or 661 offences compared to 583 offences.

Whilst anti-social behaviour (ASB) remains on some neighbourhood profiles, the nature is often low level. Speeding and parking still feature as issues for some residents. Less than 1% of people surveyed felt that ASB was a problem locally (fewer than 4 people in approximately 600 in a 12 month period).<sup>1</sup>

Crime against businesses continues to be a problem in South Cambridgeshire. There are some vulnerable locations within the district. Crime prevention work continues with businesses in the district. Top ten businesses (highest volume of offences) in South Cambridgeshire include Supermarket's and petrol stations who are already engaged with the constabulary. Smaller independent industrial sites and public buildings continue to be targeted by offenders.

The CDRP continues to have a statutory duty to deliver the Integrated Offender Management scheme (IOM). This scheme is delivered county-wide with support from local partnerships. South Cambridgeshire has relatively few offenders that are prolific enough to qualify for the scheme, there are 2 or 3 on the scheme at any one time.

### Section 1.2: Recommendations

---

It is recommended that the partnership continue with the following priorities for 2013/14

#### **1. Tackling anti-social behaviour and supporting troubled families. In particular for 2013/14;**

- Continue working in partnership to challenge perpetrators of anti-social behaviour and support victims.
- To reduce criminal damage and work with perpetrators to help change their behaviour and improve their understanding of the impact of their actions.

---

<sup>1</sup> Cambridgeshire Constabulary PIC survey data



Research & Performance Team, Cambridgeshire County Council

- In particular, the partners need to work with vulnerable people who are at higher risk of harm.
- Embedding the use of E-CINS the online multi-agency case management system and mainstreaming the case work within South Cambridgeshire District Council (SCDC).

## **2. Preventing and reducing crimes against businesses**

This priority should remain for a further year whilst activity is embedded into mainstream work for the partners. In particular;

- To help licensed premises, who wish to, to become part of the existing CMBAC scheme<sup>2</sup>
- To support business to reduce crime by providing crime reduction advice and support.

## **3. Shaping and supporting new growth, including taking account of its impact on existing communities**

- In particular working together with planners developing Northstowe and Longstanton.
- Continue to improve engagement with all communities in the district.

## **4. Committing support and appropriate resources to the Integrated Offender Management scheme in Cambridgeshire**

- To continue the excellent partnership working to support and challenge offenders in South Cambridgeshire.

## **5. Supporting work to reduce domestic abuse**

- Raising awareness of the changes in definition, which now includes those ages 16 – 18.
- Working with partners to ensure younger victims and offenders have access to appropriate services.
- Continue work to reduce repeat victimisation.

---

<sup>2</sup> Cambridge Businesses against Crime

## Section 2: Introduction

---

The purpose of this strategic assessment is to provide the South Cambridgeshire Crime and Disorder Reduction Partnership (CDRP) with an understanding of the crime, anti-social behaviour and substance misuse issues affecting the district. This will enable the partnership to take action that is driven by clear evidence.

### Background

---

The strategic assessment is produced annually, and forms part of the business planning process for the South Cambridgeshire Crime and Disorder Reduction Partnership (CDRP). A variety of data sources were used in both the scanning and analysis stages (for a full list please see appendix A). The approach used for the strategic assessment follows the SARA model<sup>3</sup>. After scanning was carried out a meeting was held with key officers in the district and all the areas of concern were agreed for further analysis. A second meeting was held with key officers and board members to discuss the key findings and recommendations prior to finalising the document.

### Structure of the document

---

In order to provide a holistic representation of problems across the district, the strategic assessment draws on a wide range of data that is shared across the partnership. The document is set out in four main chapters:

- Key findings and recommendations
- Overview of crime and disorder in South Cambridgeshire
- Performance and partnership activity during the last 12 months
- Analysis of key issues

The strategic assessment is the starting point of the wider partnership business planning process, which helps to inform the local action plans. To aid this process the analysis of key findings are organised according to the current partnership priorities. The action plan is reviewed and updated on an monthly basis by the Tasking and Co-ordination Group.

### Additional data

---

The Research and Performance team has created an interactive community safety atlas that can be accessed here <http://atlas.cambridgeshire.gov.uk/crime/atlas.html>

This provides data for some of the main crime and disorder issues in the district at ward level. It is publicly available and shows 5 year trends and comparator data (where available). The atlas allows the user to review the trend data directly on the map or in a chart.

---

<sup>3</sup> SARA: Scanning, Analysis, Reaction, Assessment - [http://www.popcenter.org/library/reading/pdfs/Rocket\\_Science.pdf](http://www.popcenter.org/library/reading/pdfs/Rocket_Science.pdf)

**Section 3: Overview of Community Safety**

This section provides an overview of crime trends in the district and highlights any emerging issues.

South Cambridgeshire has a population of approximately 148,800<sup>4</sup>, which is 24% of the county total. Since the 2001 census the population has increased by 14%. The district is predicted to grow by a further 27% in the next 20 years.

As crime has fallen over time since 1995, so has the likelihood of being a victim of a crime. For Cambridgeshire, 85% of victims were aged between 16 and 65. Those living in more deprived parts of the county were more likely to be a victim.

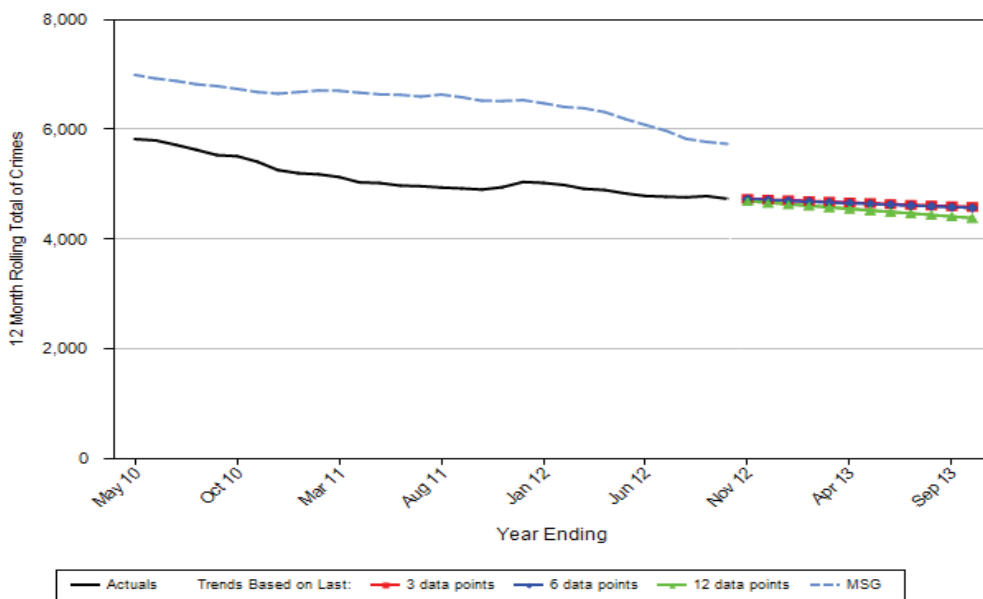
South Cambridgeshire CDRP remains in position 3 in its most similar group for total crime, where position 1 is the best performance with the lowest rate of crime. The rate for total crime was 31 per 1,000 population compared to the group average of 38 per 1,000.<sup>5</sup>

**Rural South Cambridgeshire**

There are two definitions of rural crime. The definition that most appropriately applies to South Cambridgeshire is a crime that occurs in a rural location. As South Cambridgeshire is a rural district with very few large settlements this applies to almost all of the crime here. There is no need therefore for a separate priority, as within the existing priorities the impact of the rural nature is considered. The likelihood of becoming a victim varies depending on personal circumstances and lifestyle. The lowest risk lies with someone in an older age range living in an affluent rural area.

**Section 3.2: Long-term trends**

Figure 1: Long-term trend of volume of total crime – iQuanta



<sup>4</sup> Census population estimate 2011  
<sup>5</sup> 12 month data to October 2012

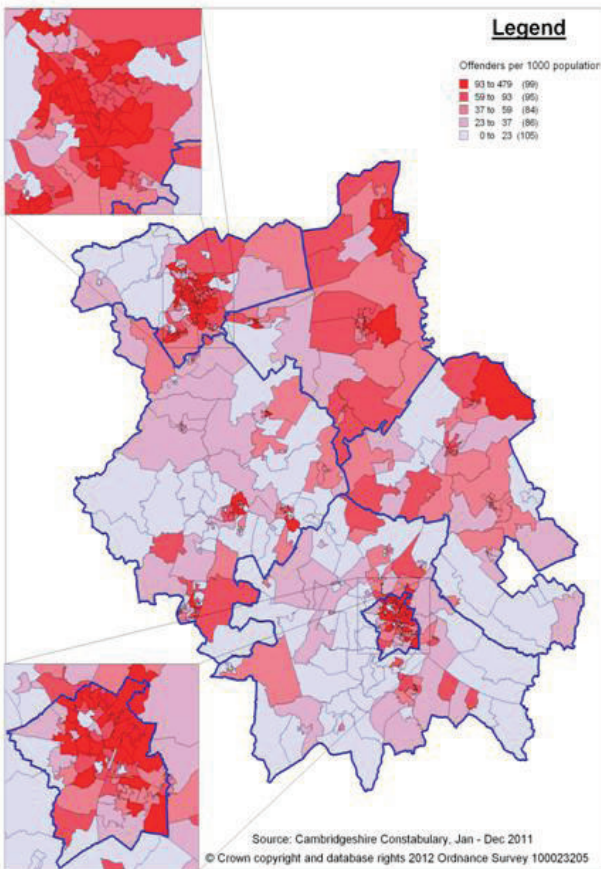
The recent trend for the volume of total crime is a slower rate of reduction compared to the previous two years. The long-term projection, based on recent data, indicates a continued reduction, albeit at a much slower rate of decline than previously. The rate of total crime for South Cambridgeshire for the 12 months ending November 2012 was 31 per 1,000 population for total crime compared to the previous year when the rate was 33 per 1,000 population.

**Section 3.3: Victims and Offenders**

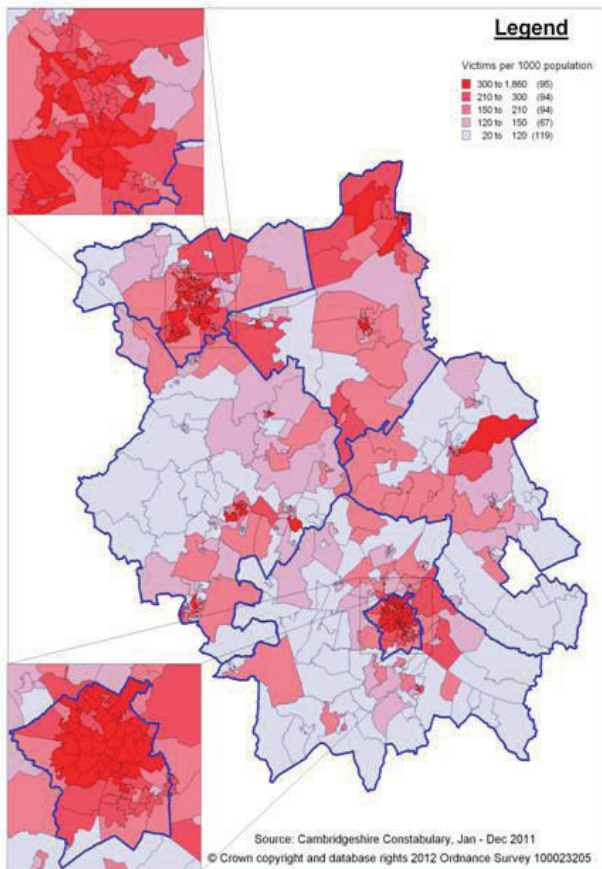
The map below demonstrates what a safe district South Cambridgeshire is. It shows the rate of victimisation and offending per 1,000 population by lower super output areas (LSOAs) in Cambridgeshire. The darker the colour, the higher the rate of victimisation or offending within the resident population. However, the majority of South Cambridgeshire is pale with no areas recording the particularly high levels of victims or offenders.

**Figure 2: Rates of victimisation and offending by ward**

**Rate of Offenders per 1000 population**



**Rate of Victims per 1000 population**



**Section 3.4: Additional Monitoring**

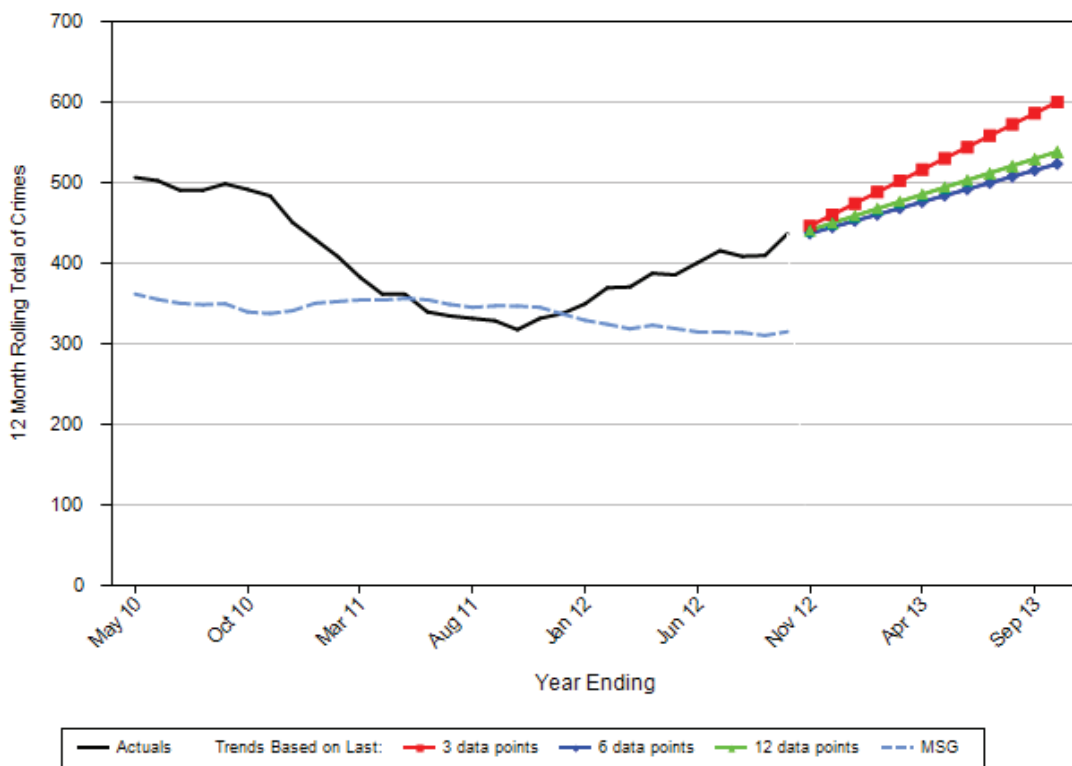
This section highlights issues within the remit of the partnership that are not covered elsewhere in the document

**Burglary**

Burglary has increased in the district by 16% comparing January – December 2012 with the previous year. That is an increase of 54 offences from 337 to 391. The CDRP is in position 13 in its most similar group (were 15 is worst).

The chart below shows the position the CDRP is compared to its most similar group of partnerships.

**Figure 3: Burglary dwelling trend for South Cambridgeshire - iQuanta**



Recent police analysis has highlighted that some areas have been particularly vulnerable to repeat burglaries.

- Some of these locations are long roads that can sometimes be the focus of a series of offences.
- There are some specific addresses that are more vulnerable to repeat offences due to temporary circumstances such as a property being vacant while work is being carried out.
- As would be expected there are specific addresses which appear to be more vulnerable to repeat offences due to the remote location of the property and/or due to the occupants being elderly.
- Some properties are also more vulnerable to repeat offences due to the property being associated in some way with potential offenders.

Overall the level of dwelling burglaries remains low, but higher than the comparator group and higher than the level in 2011/12. It is therefore important to consider the rate of dwelling burglaries within the district which shows that the rate has decreased slightly from 6 per 1,000 population to 5.4 per 1,000 population between November 2011 and November 2012. As the district continues to grow and increase in population the number of burglaries is very likely to increase. Current evidence indicates that the rate of dwelling burglary is less likely to increase.

## Road safety<sup>6</sup>

---

South Cambridgeshire had a reduction from the baseline (2005-09 average) of 28% in killed and seriously injured. This was the largest reduction in Cambridgeshire. In 2011 there were 403 accidents in South Cambs, 23% of those that occurred in the county.

It should be noted that last year 45% of all casualties, 51% of serious injuries and 88% of deaths occurred on rural roads (those having a speed limit of more than 40 mph).

Whilst South Cambs has a high rate of injured per head of population, the indicator does not take into account the volume of 'through' traffic (non-residents) included within the figure and therefore the measure is not a good indicator of risk of being injured in an accident.

Cambridgeshire and Peterborough Road Safety Partnership (CPRSPP) continue to work on their priorities. Within South Cambridgeshire the constabulary and initiatives such as Community Speedwatch continues to respond to local concerns.

---

<sup>6</sup> Key findings taken from The 2011 Joint Road Casualty Data Report

## **Section 4: Performance and Partnership Activity**

---

For 2012/13 the partnership adopted a new way of working. The full board now meets only twice during the year and remains responsible for agreeing the budget, priorities and targets, approving the annual report and challenging the half-year review. A new Tasking and Co-ordination Group meets on a monthly basis to set specific actions, review progress and performance, identify emerging issues and manage the budget. The new approach focuses on shared intelligence and taking swift joint action.

Key partnership activity within the last 12 months;

- Addressed anti-social behaviour by challenging perpetrators about their behaviour and enforcing tenancy agreements
- Direct support to victims of domestic abuse to access support services
- Prosecuted perpetrators of benefit fraud
- Taken action in 38 cases of Housing & Council Tax Benefit fraud totalling over £100,000
- Fire safety advice delivered to over 300 school children
- Dealt with over 150 abandoned vehicles and cleaned up 350 fly tipping incidents
- Reduced vehicle crime by providing crime prevention advice to residents
- Tackled metal theft through regular action days
- Tackled speeding by providing communities with the speed limit stickers to display
- Allocation of a PCSO to specifically work alongside businesses and build communication channels
- Working with the Local Health Partnership to better understand mental health referral pathways and the mental health 'system' and build relationships with mental health professionals
- Engaging with the troubled families agenda (Together for Families) to ensure the children in these families have the chance of a better life

The Partnership set a target to reduce total crime by 4% by March 2013. Partnership is on track to meet this target if performance for total crime remains in-line with current recording. For the period April 2012 to December 2012 the district recorded 3,608 crimes: 7% or 255 fewer crimes than the previous year.

Research & Performance Team, Cambridgeshire County Council

**Section 4.1: Partnership Calendar of Community Safety Issues**

To assist with partnership planning the Research and Performance Team produced a calendar based on 5 years data (local, county and national where appropriate) to provide the group with an understanding of when there are typical peaks in selected crime types and community safety issues.

**South Cambridgeshire - Community Safety Partnership Calendar**

	Offence Volume	April	May	June	July	August	September	October	November	December	January	February	March
Personal	Violence against the person	PEAK B						PEAK B					
	Sexual offences***			PEAK B					PEAK B				
	Domestic abuse incidents				PEAK B								
	Assault less serious injury				PEAK B			PEAK A					
Property	ASB					PEAK B							
	Domestic Burglary								PEAK A	PEAK B			
Business	Vehicle Crime					PEAK C						PEAK B	
	Non domestic burglary								PEAK B				
	Robbery of business property*												
	Theft from shops	PEAK A	PEAK A	PEAK A									PEAK A
Environmental	Arson					PEAK A							
	Criminal Damage		PEAK C										
	Fly Tipping**												
Rural***	Diesel Theft												
	Hare Coursing												
	Metal Theft												
	Other thefts from farms												
<b>Key Events</b>													
2012 Olympics				25th July	12th August								
2012 European Football Championships			Start 8th	End 1st	England 11th, 15th, 19th, 19th (all evening matches)								
School Holidays		30th - 15th HOL	4th-8th HT	23rd July HOL	to 4th Sept	29th Oct HT			to 2nd Nov	21st Dec HOL		13-17th HT	
Other National Holidays			5th June DJ										
Summer Proms				Mid July									

**Produced By the Research & Performance Team, Cambridgeshire County Council**

References:

\*Seasonality in recorded crime: preliminary findings, RDS Home Office Report 02/07

\*\* Fly Tipping, Causes, Incentives, Solutions, JDI, UCL, 2006 (based on Dudley only)

\*\*\* Peak extended for Cambridgeshire as per reports findings

\*\*\*\* Source: Adapted from Rural Crime Action Team Calendar

Key:

5 Year data:

Seasonal High or Peak Close to Upper  
Seasonal Peak Above Upper SD

Last year 2011/12

PEAK A 2011/2012 Peak Above Upper SD

PEAK B 2011/2012 Peak Above Mean

PEAK C 2011/2012 Peak Below Mean



## Section 5: Priority Analysis

This section of the document provides the key findings for the each of the partnerships current priorities.

### Section 5.1: Anti-Social Behaviour

This section focuses on anti-social behaviour occurring in the district and the public perception of it.

The rate of anti-social behaviour continues to fall in South Cambridgeshire. The rate is half that of five years ago, going from 37 per 1,000 population in 2008 to 18 per 1,000 population in 2012. The district has consistently recorded the lowest rate of incidents in the county.

**Table 1: Volume and rate of police recorded ASB**

	2008	2009	2010	2011	2012
Rate per 1,000 population	37	33	28	23	18
Volume of incidents	5,247	4,773	4,059	3,378	2,620

There were reductions seen in all the neighbourhood areas over the same period. These were particularly notable in Melbourn and Cambourne which reduction by 57% and 55% respectively.

In 2012 17% of all recorded crime in South Cambridgeshire was criminal damage or 706 crimes. This is a large proportion for a single crime type. Perpetrators of criminal damage are often associated with other anti-social behaviour problems in their communities. Identifying and engaging with persistent offenders that are causing a concern in relation to ASB and criminal damage would provide an opportunity for the partnership to reduce crime and ASB further.

In general public perception is that anti-social behaviour is not a problem within the district. Specific issues raised at neighbourhood panels during 2012 were;

- The most frequently mentioned issues were vehicle issues which included parking and speeding (49%)
- The second most discussed issue was crime which included burglaries (11%)
- The third most often mentioned was general ASB (9%)
- The forth most discussed was vandalism/criminal damage, which included graffiti (7%)

It should be noted that speeding issues are not always borne out by data capture and can sometimes reflect the perception of speeding.

Approximately 13% of 'personal' anti-social behaviour recorded by the police was medium or high risk.<sup>7</sup> This is in line with the proportion of high/medium risk assessed in the county. The introduction of E-CINS will allow the partnership to better understand the nature of the vulnerability of victims and offenders.

<sup>7</sup> Data reflects that police recording of risk assessment commenced in April 2012

**Section 5.2: Crimes against Businesses**

This section focuses on offences committed at 'business' locations or against businesses.

A quarter of crime in the district (1,139 offences) was recorded as occurring at a 'business' location. Of these offences 87 offences occurred at agricultural locations (less than 2%).

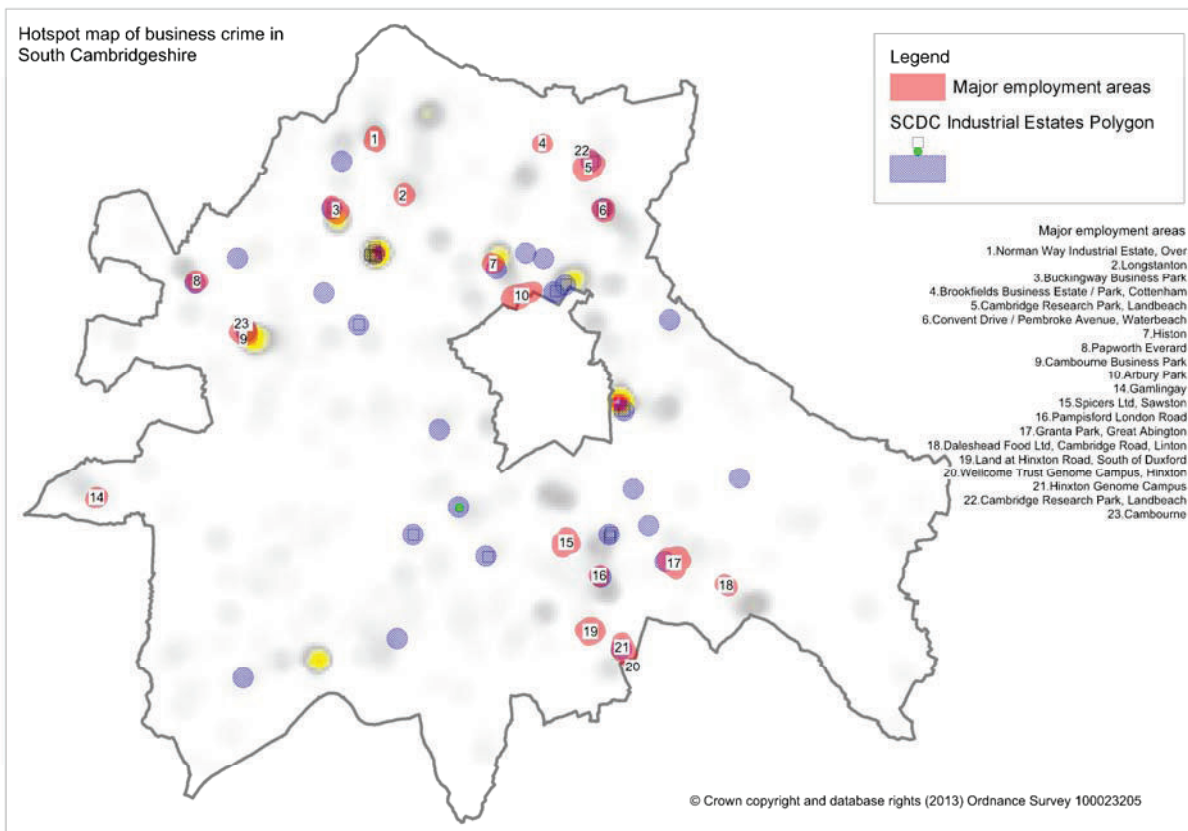
The distribution of crime types at business locations were;

- 48% of fraud and forgery
- 31% of theft and handling
- 27% of burglary
- 14% of violence

22% has no location type recorded. Examining the crime description revealed that a further 134 crimes had been committed against businesses. These were 102 non-dwelling burglaries, 25 shop thefts and 7 criminal damage offences to a building that is not a dwelling. Metal theft<sup>8</sup> – 65 offences of metal theft were recorded by the constabulary between April and October 2012. There is however, no comparison data available for the previous year.

Crimes at business locations or against businesses are very much spread around the whole district and village centres still. When analysed geographically there are specific hotspots evident within South Cambridgeshire. The map below shows which business locations are more vulnerable than others.

**Figure 4: hotspot for business crime in South Cambridgeshire**



<sup>8</sup> Official figure – CADET, Cambridgeshire Constabulary

Employment areas definition - These are the areas defined by district councils as "employment areas" - i.e. the defined business parks and employment spaces in local plans.

Key findings are;

- Crimes not within main industrial or agricultural areas are often along high streets, e.g Cottenham.
- Petrol stations also account for 2 hotspots along the A14, some of this relates to offences of making off without payment.
- Public buildings can also be vulnerable such as libraries, halls, nurseries, schools and hospitals. Hospitals were located at 2 of the hotspots.
- There was a hotspot at the Swavesey business park, which recorded a particular cluster of incidents.
- There is a hotspot at Cambourne, some of these offences do not match known business locations. Some of these may be non-dwelling burglary related to shed or garages not attached to residential buildings. But also highlights the difficulty in analysing the data where the Home Office categories confuse the overall picture.
- Top ten businesses are retail stores (including petrol stations), they are engaging well.

## **Section 5.3: Supporting Communities and Growth**

---

This section highlights some issues with South Cambridgeshire that may impact on crime and anti-social behaviour, in relation to growth and new communities. The population in the district has grown considerably and is predicted to continue increasing.

### **Design and new developments**

---

The district council's affordable housing policy states "that the Council will seek 40% or more affordable housing on all sites of two or more dwellings."<sup>9</sup> Further, of this 70% will be social rent and 30% intermediate housing. Locations with a higher proportion of social rent accommodation tend to have higher rates of anti-social behaviour. However, there are ways the partnership can influence developments that would mitigate against this.

Recent research<sup>10</sup> has highlighted four key areas of design that require attention in order to reduce the likelihood of crime and anti-social behaviour

- **Parking** – Can be a major source of neighbour disputes, anti-social behaviour and in some cases criminal damage and assault.
- **Design quality** – Avoiding 'weak points' such as areas that are not overlooked, crime and ASB tend to happen here.

---

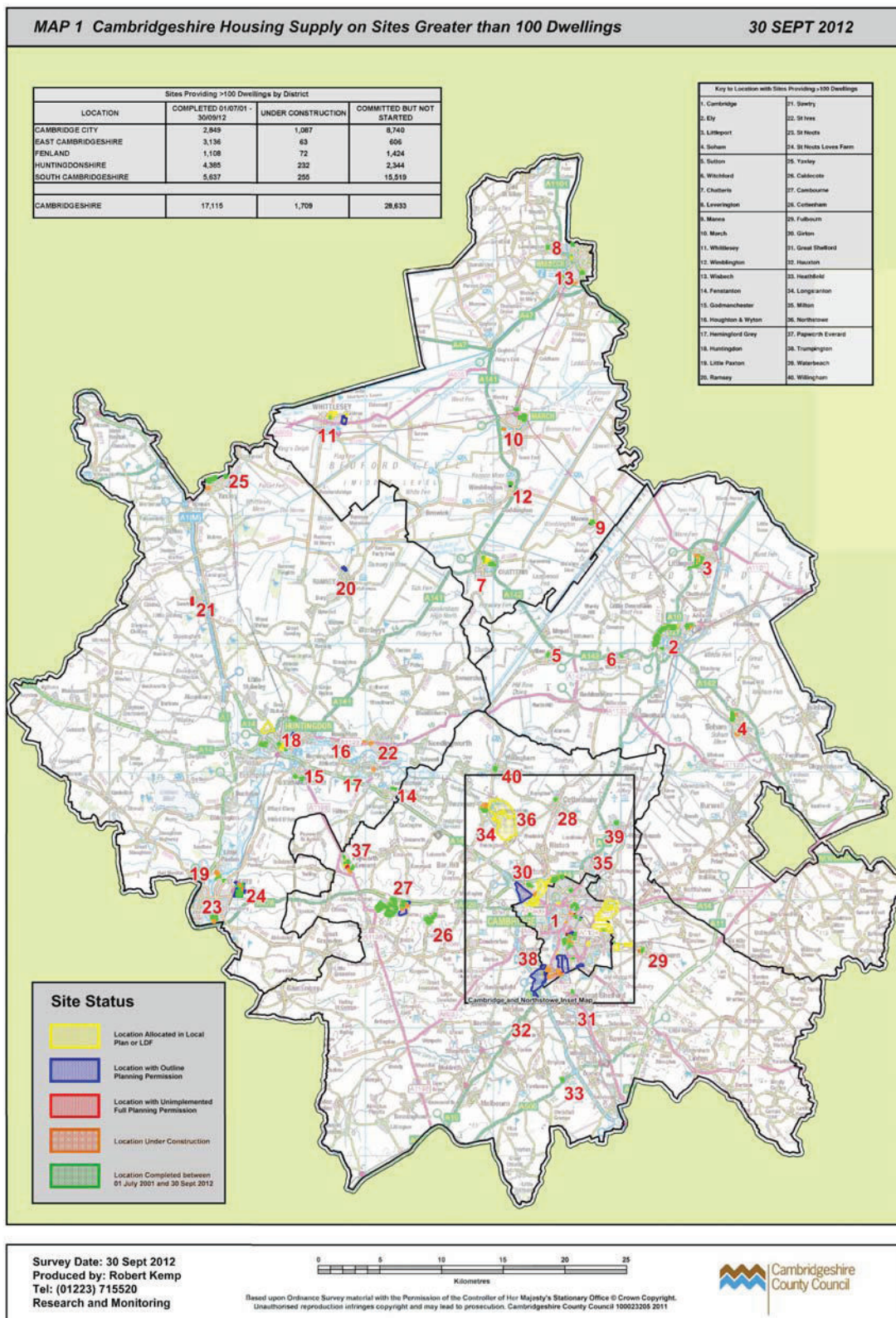
<sup>9</sup> Policy HG/3 of the Development Control Policies DPD

<sup>10</sup> <http://www.designcouncil.org.uk/crimeresearch>

Research & Performance Team, Cambridgeshire County Council

- **Management and maintenance** – particularly important for larger development, where work will be phased. Good management and maintenance increases feelings of ownership. Consistent and well resourced management has strong buy in from residents.
- **Gating** - Strong perimeter security through gating is not a cure for good or bad design within a development. The highest crime scheme in the research was the only one that was gated.

Map 1: Map of new developments in Cambridgeshire



## People

The population of South Cambridgeshire is expanding. The analysis of the 2011 census shows that an increase has been seen in all the broad age-groups above the England and Wales change.

**Table 2: Population change by age group, 2001-2011**

	2001-2011 Population Change (%)		
	0-19	20-64	65+
South Cambridgeshire	11.4	10.6	28.6
Cambridgeshire	7.2	10.7	22.6
England and Wales	3	8.2	11

The data shows that whilst the over 65 population has recorded the highest percentage increase since the 2001 census; there was also considerable increase in the 0-19 year olds. As the district continues to grow, the community needs will grow with it. Of particular relevance are the needs of children and young people. Tension can arise when young people have little to do beyond wandering the streets and older members of the community perceive anti-social behaviour.

### Gypsy and Traveller communities

"The East of England Plan requires at least 69 new permanent pitches to be provided in South Cambridgeshire between 2006 and 2011, and an allowance for future household growth beyond 2011, adding up to a total minimum requirement of 127 pitches between 2006 and 2021. Taking account of completed sites since 2006 outstanding permissions at 2009, the residual minimum requirement to be found through new permanent sites is 88 pitches."<sup>11</sup>

Finding the required sites for these pitches has been challenging and the process slow. The difficulties involved are emphasised by the response to the 2009 Gypsy and Traveller Development Plan consultation.

*"A significant number of representations have been received and it has taken longer than anticipated to register and consider the issues raised. 3,795 representations were received from 714 people and organisations. Of these 3,114 (82%) were objections, 266 (7%) were support and 415 (11%) were comments. In addition a petition signed by 1,111 people was submitted objecting to the site option of Spring Lane Bassingbourn....A small proportion of those making representations included material that the Council cannot lawfully publish."*

<sup>11</sup> South Cambridgeshire Local Development Framework, Gypsy And Traveller Development Plan Document, Issues and Options Report 2: Site Options and Policies

## **Section 5.4: Offending**

---

The recent Victim Offender Needs Assessment analysed the full data for Cambridgeshire and Peterborough. It stated that to reduce offending partners need to understand the 'Life Course' model of offending. This explains what factors and events increase the risks of an individual becoming a prolific offender. These break down as follows;

Onset of offending: The time at which someone first offends;

- Those who commit offences at an early age 10-13 are more likely to be persistent and prolific offenders.
- Family factors are important in explaining some offending behaviour as well as community factors.
- Risk factors overlap with those for other negative outcomes e.g. substance misuse and ill-health.

Persistence of offending: The length of time (often in years) over which someone will continue to offend.

Frequency: The rate at which someone offends;

- Prolific Offenders

Desistence: The point at which the offending behaviour conclusively ends.

### **Cambridgeshire's Integrated Offender Management scheme**

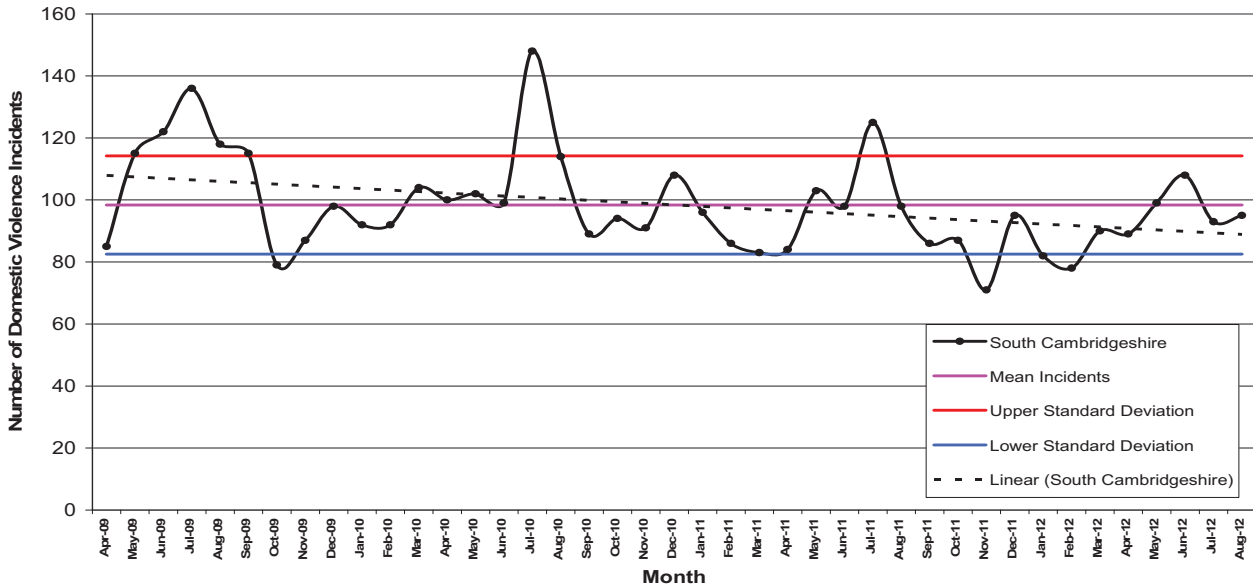
Locally it was noted that 86% of prolific offenders received their first conviction in a Cambridgeshire Court as a juvenile. The mean length of criminal career (time since first conviction) prior to offenders joining the PPO scheme was seven years.

South Cambridgeshire has relatively few offenders that are prolific enough to qualify for the scheme, there are 2 or 3 on the scheme at any one time. These individuals will move off the scheme as their offending reduces. Those that do not engage and continue to offend, once reconvicted tend to serve subsequent prison sentences.

**Section 5.5: Domestic Abuse**

The level of domestic abuse reported to the police has for the most part remained below the long term mean. The overall long-term trend is a decline in incidents. Nationally the small reduction in self reported domestic abuse was not significant.<sup>12</sup> Further work should be done to increase awareness about services that are available to victims.

**Recent trend in police recorded domestic violence incidents**



The rate of incidents has remained relatively static over the previous 2 years at approximately 7.6 incidents per 1,000 population.

The number of referrals to the Independent Domestic Abuse Service (IDVAS) was 121, 18% of the county total. For the third quarter of this year, 91% of referrals were engaged with the IDVAS. This was the highest for the county and well above the target.

The Home Office definition of Domestic Abuse will change from the 1<sup>st</sup> April 2013 to include 'those aged 16 or over'. This is supported by the findings from the British Crime Survey 2008/10 found that 16-19year olds were the most likely to suffer abuse from a partner. This is likely to increase the number of individuals, particularly young women in need of support and intervention. The partnership should consider how it will respond to the increased need in the district.

*"The impact of domestic abuse on children should not be underestimated. The Joint Strategic Needs Assessment in Cambridgeshire reported that eight per cent of respondents in the Year 8 and 10 Cambridgeshire Secondary Survey in 2010 indicated they experienced domestic abuse within the home. In addition at least 75 per cent of looked after children, and 50 per cent of children subject to a Child Protection Plan in Cambridgeshire come from domestic abuse backgrounds."*<sup>13</sup>

<sup>12</sup> Crime Survey for England and Wales 2011

<sup>13</sup> Victim Offender Needs Assessment 2012

## **APPENDIX A. Data Sources and Acknowledgements**

---

On behalf of the South Cambridgeshire Crime and Disorder Reduction Partnership, the Research and Performance Team would like to thank all partners who have supported the process by providing data, information or analysis. A list of data sources used in the production of the continuous assessment is below:

<b>PROVIDER OF DATA</b>	<b>DESCRIPTION OF DATA</b>
Cambridgeshire Constabulary	PIC survey anti-social behaviour public perception (monthly phone survey)  Point level crime and incident data (including postcodes and grid references)  Crime detection rates  Prolific and other priority offenders (including Integrated Offender Management offenders) analysis of cohort
Cambridgeshire County Council	Youth Offending Service – analysis of cohort  Drug and Alcohol Action Team – Needs Assessments  Research & Performance team – socio-demographic data (including housing, population, deprivation and economic indicators)  Research and Monitoring – New developments
South Cambridgeshire District Council	Partnership activity update
Cambridgeshire Fire & Rescue Service	Point level deliberate fires data (including grid references)
East Anglian Ambulance Trust	Ambulance call outs for assault/sexual assault (including grid references)
Cambridgeshire & Peterborough Probation Trust	Analysis of cohort (including OASys risk and needs profile)

Where possible, data has been sourced from the most recent period available. Specific time periods for each data source are stated within the analysis.